

Consistent Colour Appearance assessment method

CIE TC 8-16, W Craig Revie

9th August 2017

2 Scope

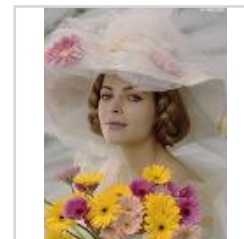
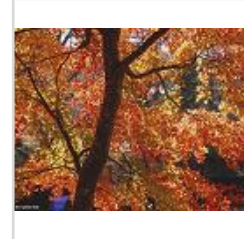
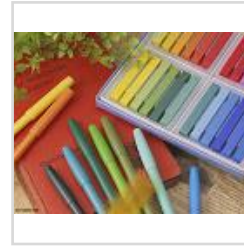
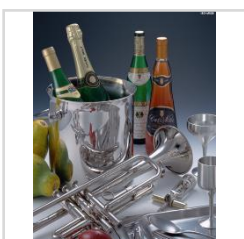
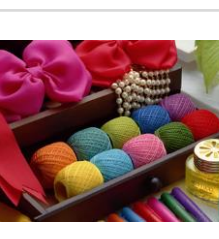
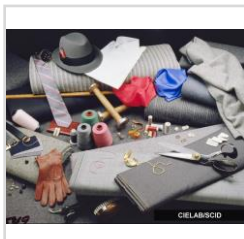
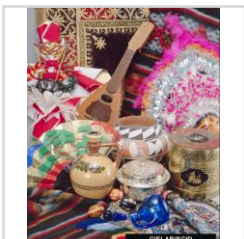
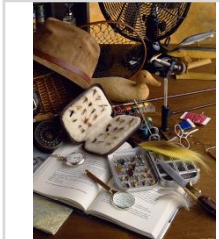
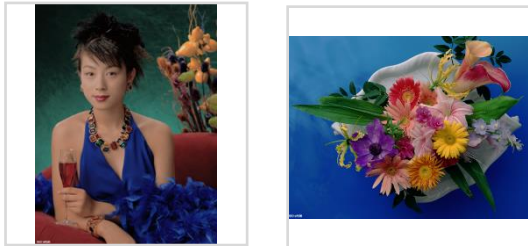
To study and report on sets of reproductions of the same source image that have a consistent colour appearance and are most similar to a reference reproduction, **including recommending assessment methods that measure the similarity of reproductions of an image with different colour gamuts**, for printed images on substrates with approximately similar characteristics in a fixed viewing environment. Only the effect of colour reproduction on appearance will be considered by this TC and so the assessment will be performed using hard copy or soft copy proofing.

To propose a metric which can measure consistency of colour appearance.

CIE TC8-16 Assessment of Consistent Colour Appearance

- Identification of resources
 - Reference images (available to all members of CIE TC8-16 – details on COLLTOOL)
 - Reference print gamuts (see <http://www.color.org/resources/r8-13/CCA-gamuts.xalter>)
 - Reference display (details from BenQ)
 - Reference proofing system
 - Uniform colour space
- Image preparation
- Viewing conditions
- Psychophysical assessment
- Measurement assessment

Candidate images (ISO 12640 SCID)



ISO12640-2 sRGB SCID

ISO12640-3 CIELAB SCID

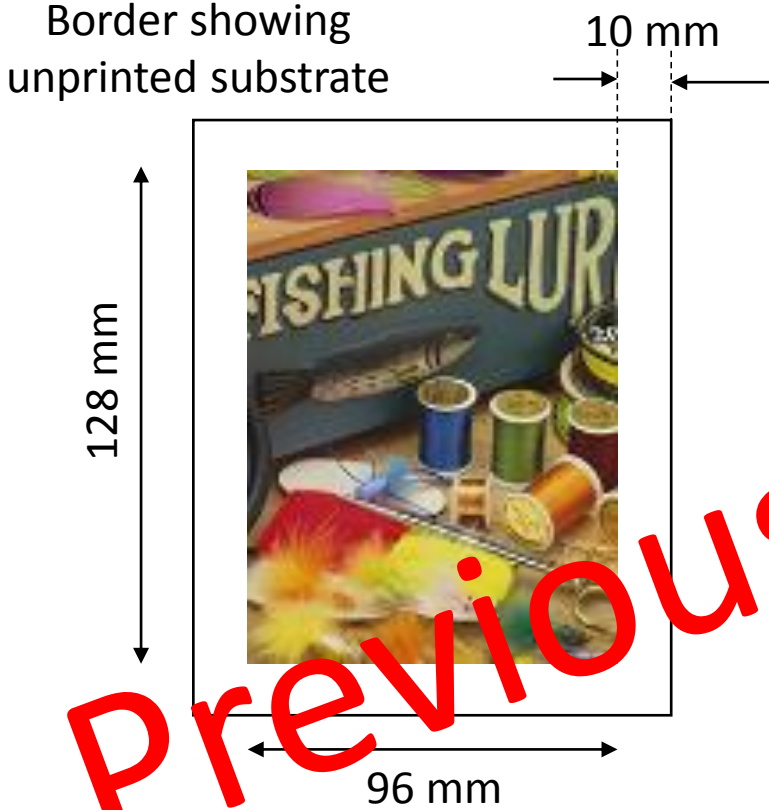
ISO12640-4 AdobeRGB SCID

Roman16 images

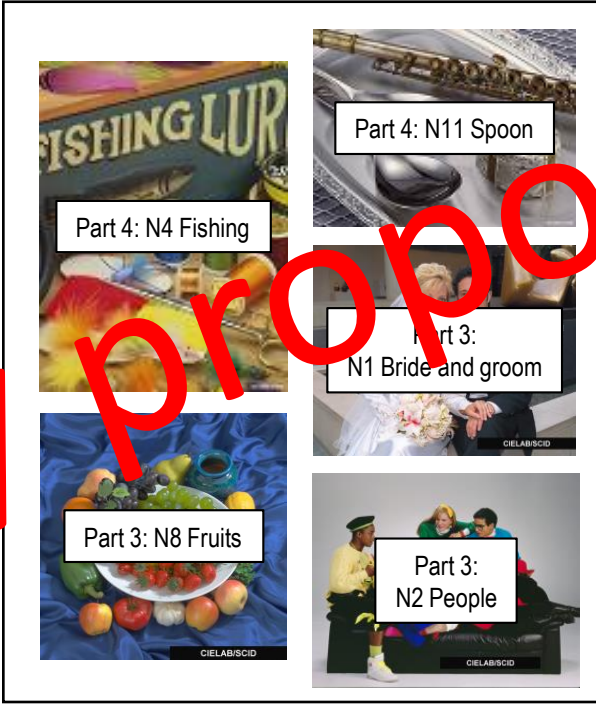


Although not representative of typical imagery these images may be better than the ISO set for some purposes, for example when it is important to see what is happening in particular parts of the colour gamut

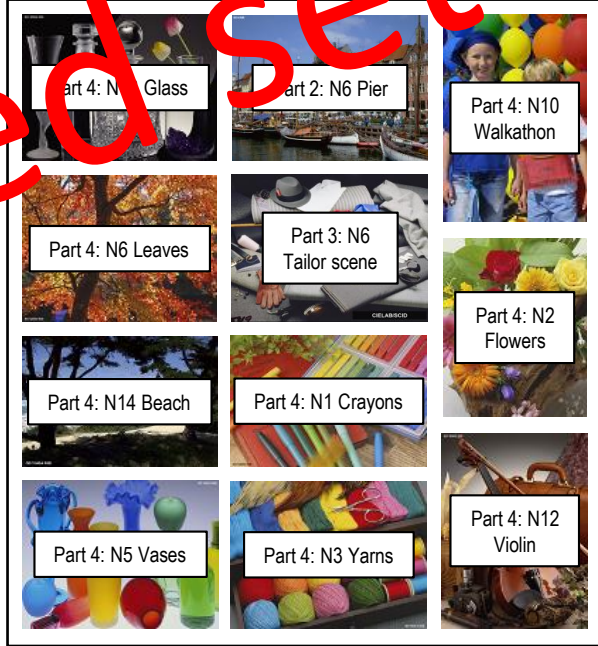
Candidate images (ISO 12640 SCID)



Previously proposed set



Primary image set



Secondary set

Images should be printed at approximately the same size

See http://www.color.org/resources/r8-13/CCA_test.xalter

Proposed revision: primary image set



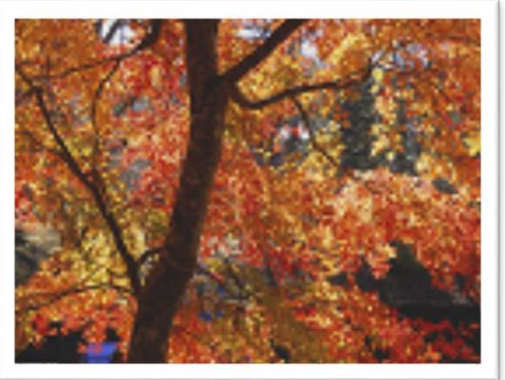
128 x 96 mm



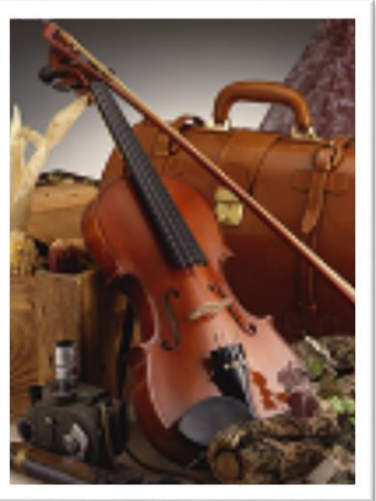
128 x 102.4 mm



128 x 128 mm



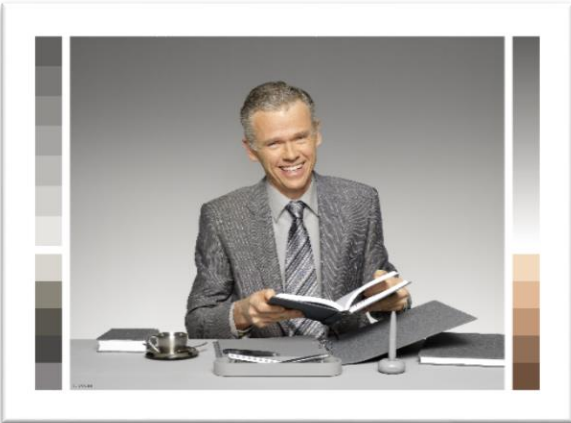
128 x 96 mm



96 x 128 mm

Suggested dimensions

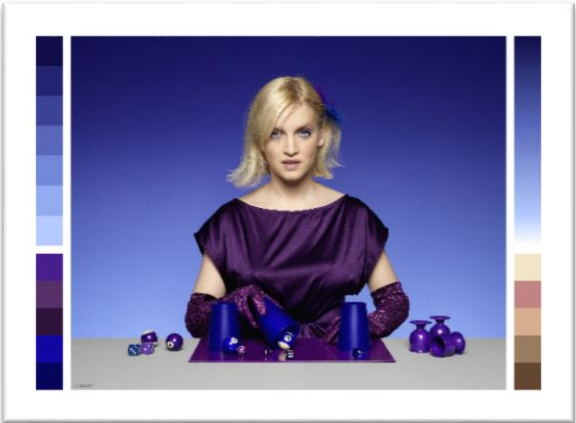
Images scaled so that longest edge is 146 mm including border



146 x 105.93 mm



146 x 105.93 mm



146 x 105.93 mm



146 x 105.93 mm

Proposed revision: primary image set



128 x 96 mm

Suggested dimensions

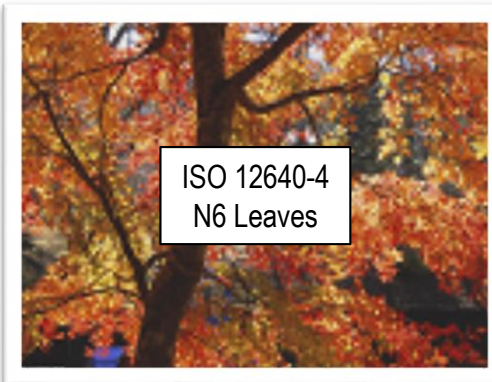
Images scaled so that longest edge is 146 mm including border



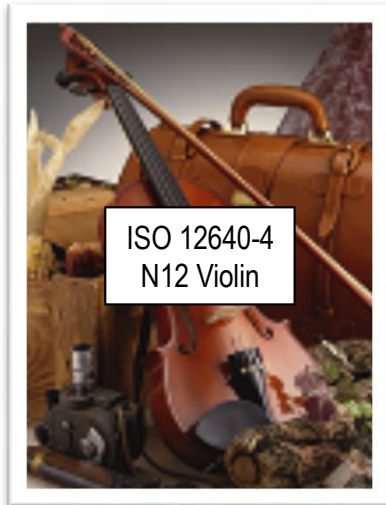
128 x 102.4 mm



128 x 128 mm



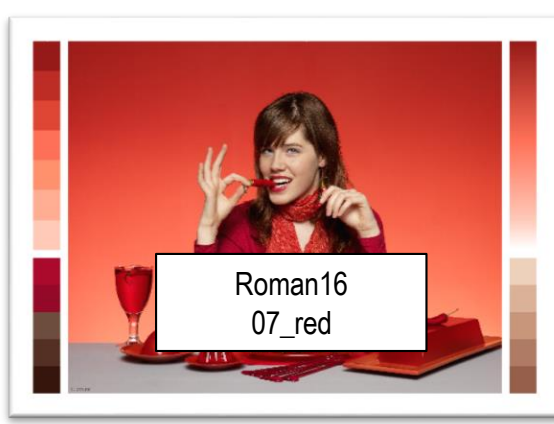
128 x 96 mm



96 x 128 mm



146 x 105.93 mm



146 x 105.93 mm



146 x 105.93 mm



146 x 105.93 mm

Proposed revision: secondary set



128 x 102.4 mm



128 x 102.4 mm



128 x 96 mm



128 x 96 mm



128 x 96 mm



96 x 128 mm



96 x 128 mm



85.11 x 128 mm



128 x 96 mm



128 x 96 mm



128 x 84.8 mm



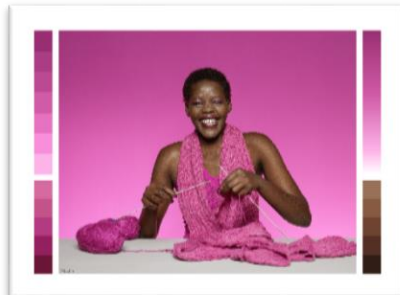
146 x 105.93 mm



146 x 105.93 mm



146 x 105.93 mm



146 x 105.93 mm

Proposed revision: secondary set



128 x 102.4 mm



128 x 102.4 mm



128 x 96 mm



128 x 96 mm



128 x 96 mm



96 x 128 mm



96 x 128 mm



85.11 x 128 mm



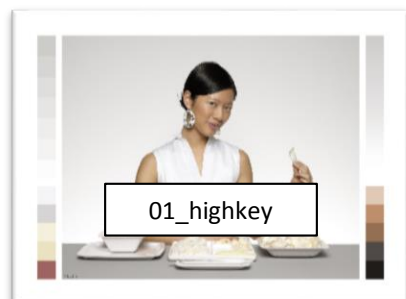
128 x 96 mm



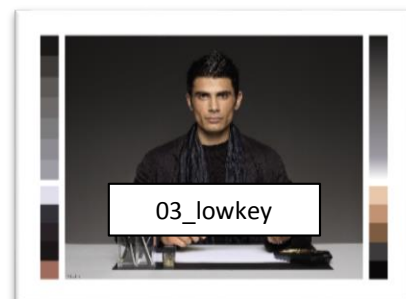
128 x 96 mm



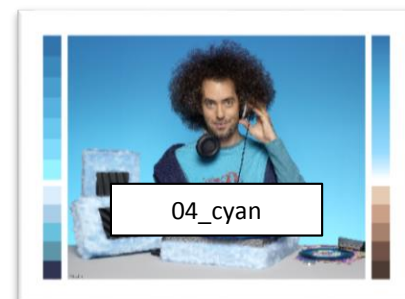
128 x 84.8 mm



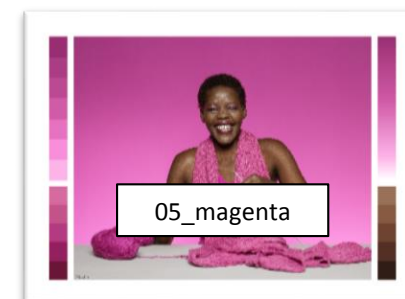
146 x 105.93 mm



146 x 105.93 mm



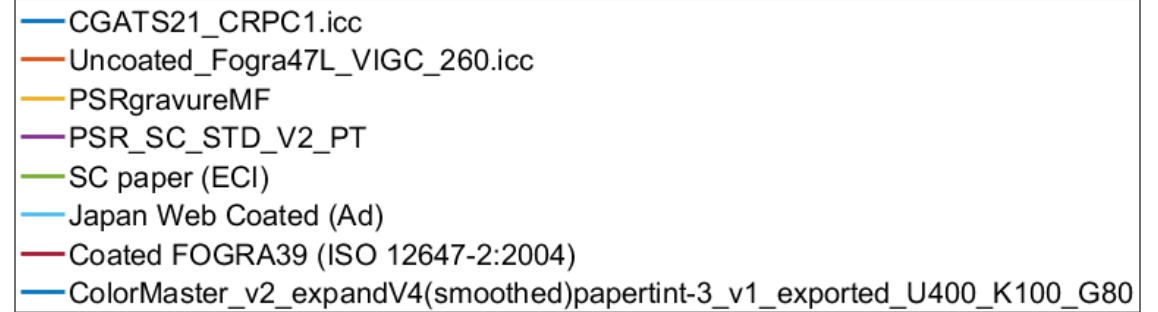
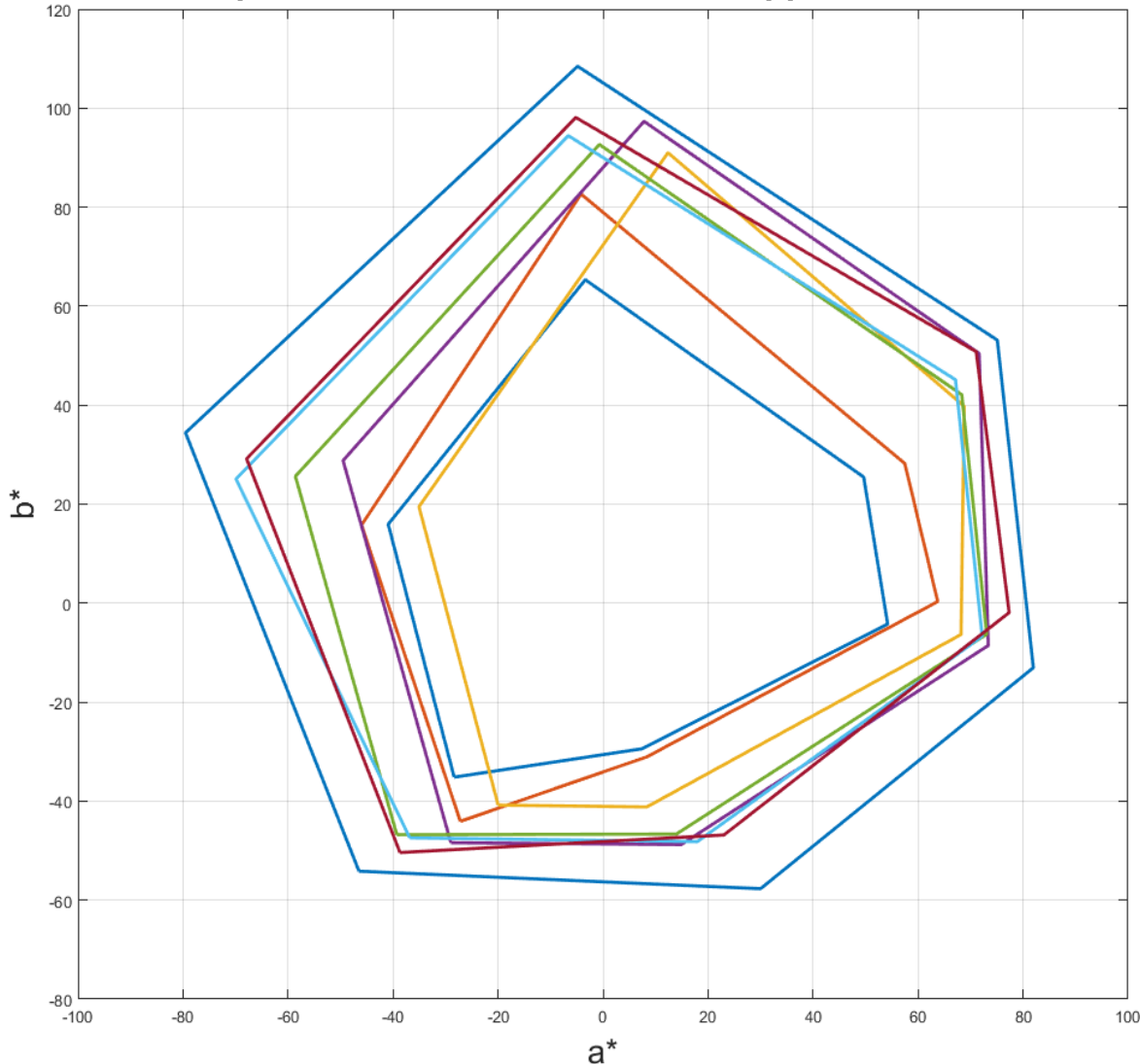
146 x 105.93 mm



146 x 105.93 mm

Candidate print gamuts

Candidate profiles for Consistent Colour Appearance assessment



CGATS21 CRPC1: [ICC profile registry](#)

Uncoated Fogra47L: [ICC profile registry](#)

PSR Gravure MF: [ECI web site](#)

PSR SC STD V2 PT: [ECI web site](#)

SC paper (ECI): [ICC profile registry](#)

Japan Web Coated (Ad): [Adobe web site](#)

Coated FOGRA39: [Adobe web site](#)

ColorMaster / Fogra53-5: [Fogra web site](#)

Note: it is not intended that these profiles should be used for rendering directly to CMYK. The associated characterisation data may be used directly but with some care the A2B1 tables (Absolute Intent) can be used to determine the colour produced by each CMYK combination

Reference printing gamuts

<http://www.color.org/resources/r8-13/CCA-gamuts.xalter>

Reference name	Characterisation data	ICC Profile
CGATS21-2-CRPC1	NPES CGATS21-2-CRPC1.txt	ICC profile registry CGATS21_CRPC1.xalter
FOGRA47	ICC characterisation data registry FOGRA47L.txt	ICC profile registry Uncoated_Fogra47L_VIGC_300.xalter
PSRgravureMF	ECI eci_gravure_psr_v2_2009.zip (PSRgravureMF_ECI2002.txt)	ECI eci_gravure_psr_v2_2009.zip (PSRgravureMF.icc)
ECI PSR SC STD V2	ECI eci_gravure_psr_v2_2009.zip (ECI_PSR_SC_STD_V2.txt)	ECI eci_gravure_psr_v2_2009.zip (PSR_SC_STD_V2_PT.icc)
SC_paper_eci	Only available from targ tag in ICC Profile	ECI eci_offset_2009.zip (SC_paper_eci.icc)
Japan Web Coated (Ad)	Not available (may be derived from A2B1 and MediaWhitePoint tags)	Adobe detail.jsp?ftpID=4075 (JapanWebCoated.icc)
FOGRA39	ICC characterisation data registry FOGRA39.txt	ICC profile registry Coated_Fogra39L_VIGC_300.xalter
ColorMaster	Not available (may be derived from A2B1 and MediaWhitePoint tags).	Fogra a-large-gamut-exchange-space.html

Intended use

The set of reference printing gamuts is identified to enable exchange of results when assessing the effectiveness of Consistent Colour Appearance reproduction algorithms.

It is recommended that where possible the characterisation data is used as the primary reference, however, it is recognised that there may be some cases where it is more convenient to use the ICC Profile as a starting point.

In some cases no characterisation data is available. In these cases the A2B1 table data should be used.

Reference Display



- BenQ SW320 :
 - 32" IPS panel
 - UHD 4K Resolution (3840 * 2160) 16:9 ratio
 - 99% Adobe RGB coverage
 - Hardware Calibration capable
 - Special pricing for CIE TC8-16 TC research work.
- BenQ will work with TC to provide guidance on
 - calibration procedure
 - viewing environment



Reference proof printer

Would it be useful to have a recommendation
for a proof printer, ink set and substrate?

If so, how can we agree this?

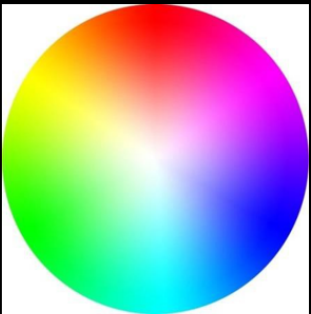
Uniform colour space



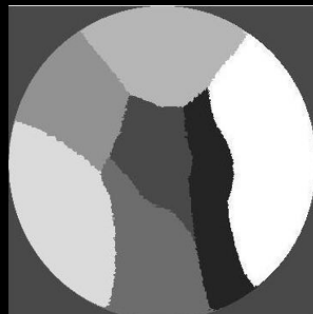
Demonstration (Image Segmentation)

Segmentation (7 regions) using K-means clustering algorithm

Original



CIELAB



CAM16-UCS



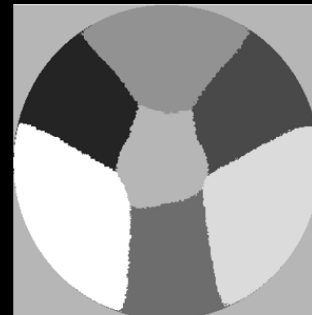
$YCbCr$



$IC_T C_P$



$J_z a_z b_z$



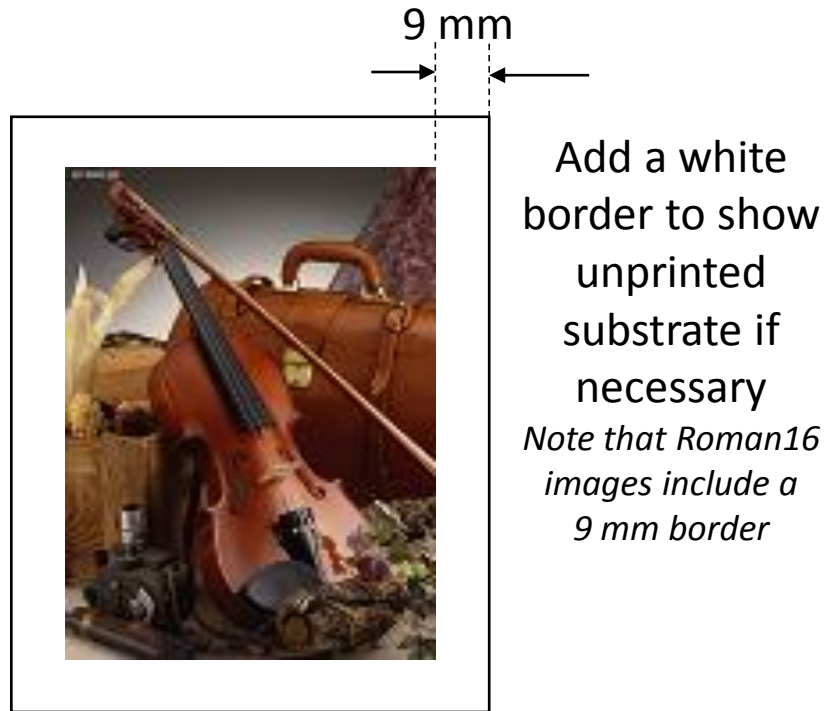
$J_z a_z b_z$ and CAM16-UCS papers are available from the CIE COLLOID area

$IC_T C_P$ white paper is available from <https://www.dolby.com/us/en/technologies/dolby-vision/ictcp-white-paper.pdf>

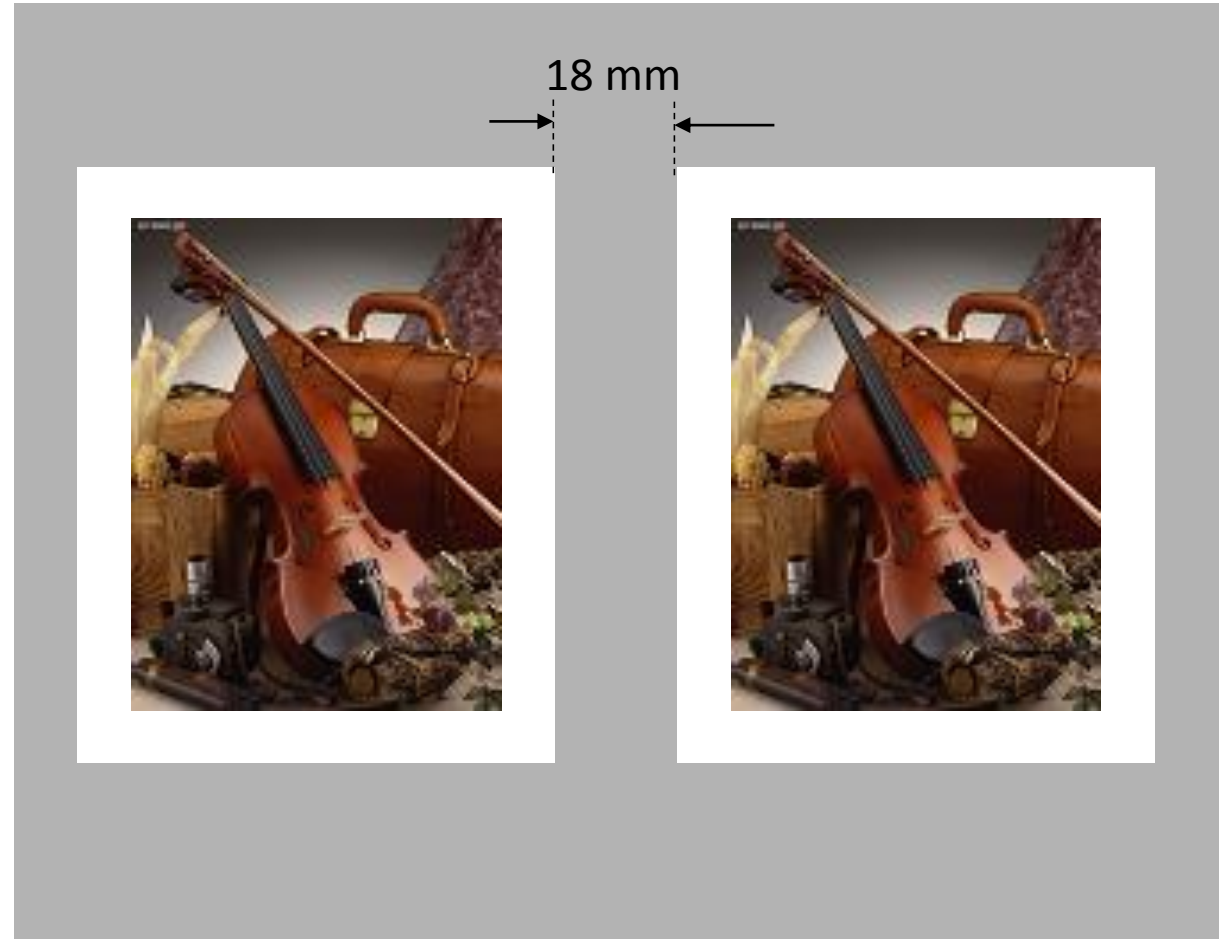
Given its ease of use and performance, perhaps $J_z a_z b_z$ should be recommended

Proposed revision: image preparation

Background may be on print or display and so may not have a flat spectrum



Images should be printed at approximately the same size and original aspect ratio should be retained



Neutral ($L^* = 50$) grey background, ideally \sim Munsell N5

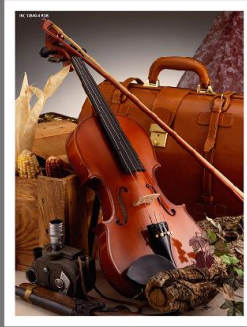
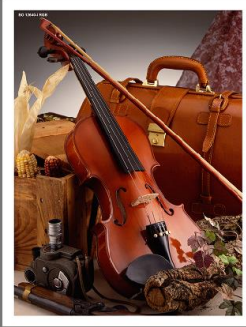
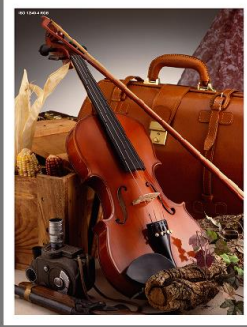
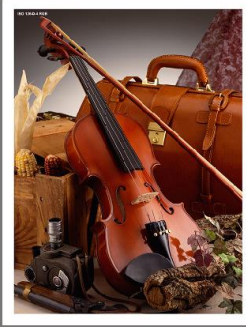
Geometry for print or display

CGATS21-2-CRPC1

FOGRA47

Japan Web Coated (Ad)

ECI PSR SC STD V2



Geometry allows viewing of up to 8 reproductions including a reference (bottom right) on a 32 inch display

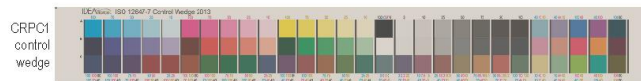
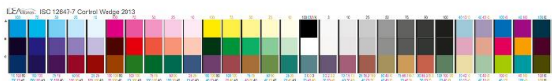
Control strips allow checking of display or proof print calibration

PSRgravureMF

SC_paper_eci

FOGRA39

ColorMaster



Details of document preparation

Image from ISO 12640-4 (AdobeRGB SCID) was...<details>

MINIMUM 16x9 DISPLAY SIZE 656 x 369 mm ~ 30"

Viewing environment



- ISO 3664:2009 Viewing conditions
- P2 viewing condition
- CIE Illuminant D50
- 500 lx +/- 125 lx (same as ICC PCS)

Hard copy proof



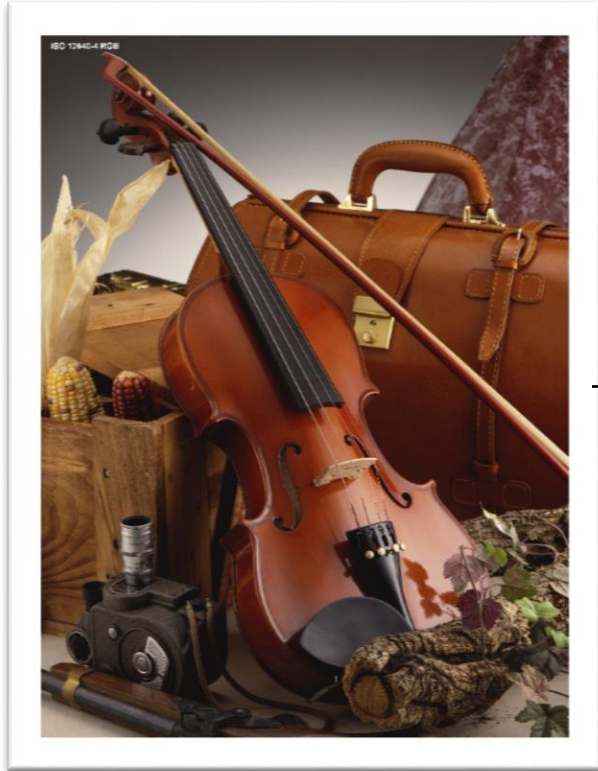
- ISO 12646:2008 Display characteristics and viewing conditions
- ISO 14861:2015 Requirements for colour soft proofing systems
- Display colour gamut must be large enough to simulate all reference print gamuts

Soft copy proof

Psychophysical assessment method

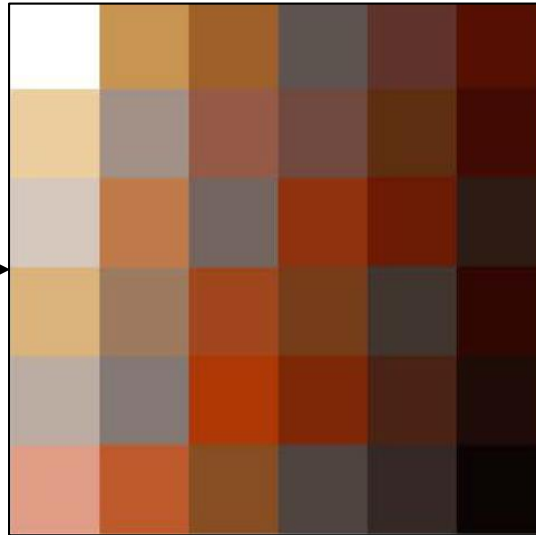
- This assessment method may be used to assess and compare rendering algorithms
 - is there a need for other assessment methods?
- Details of the assessment method need to be provided:
 - instructions for observers
- Can we compare the results of assessment on display with result of assessment of prints?

Measurement assessment



Original image
used for psychophysical
assessment

kmeans++
clustering



'Important' image colours
used for measurement
assessment

Image
reconstruction

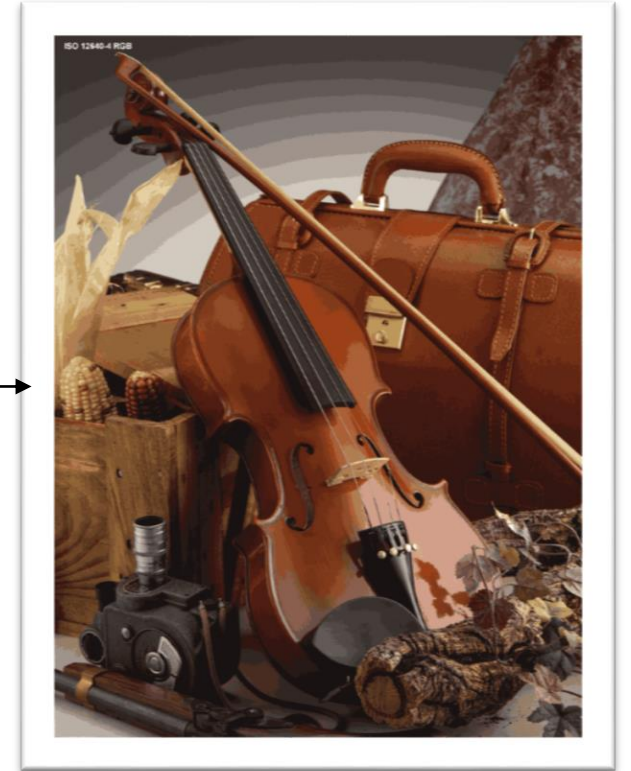
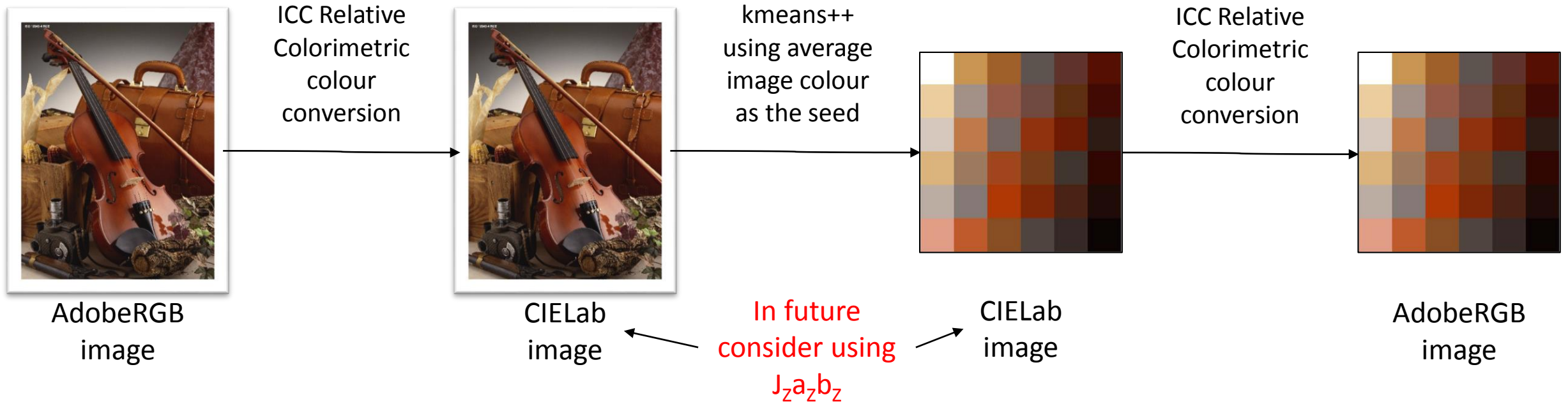


Image reconstructed using
the important image colours
as a confirmation

Algorithm details



The kmeans++ algorithm is described in the following publications:

[1] J. B. MacQueen, "Some Methods for Classification and Analysis of MultiVariate Observations", in Proc. of the fifth Berkeley Symposium on Mathematical Statistics and Probability, L. M. L. Cam and J. Neyman, eds., vol. 1, UC Press, 1967, pp. 281-297.

[2] D. Arthur and S. Vassilvitskii, "k-means++: The Advantages of Careful Seeding", Technical Report 2006-13, Stanford InfoLab, 2006.

Measurement assessment

- Would it be useful to recommend an algorithm to extract the set of important colours from an image
 - This set of colours should be measured as part of any psychophysical assessment in order to provide a basis for subsequent analysis
- How many colours are necessary to describe an image?
 - I selected 36 as a compromise which produces a reasonable quality reconstruction image and can be measured relatively easily
 - See result for some of the reference images and the result using 64 colours
- A set of images that uses these colours could also be provided
- Would it be useful to have a MATLAB implementation?

Discussion of next steps