

# Multispectral film scanning

Giorgio Trumpy, NTNU





Fylkessenter for Digitalisering av Kulturarven  
Interkommunalt Arkiv for Møre og Romsdal IKS  
ÅLESUND, NORWAY



National Gallery of Art  
Department of Imaging and Conservation







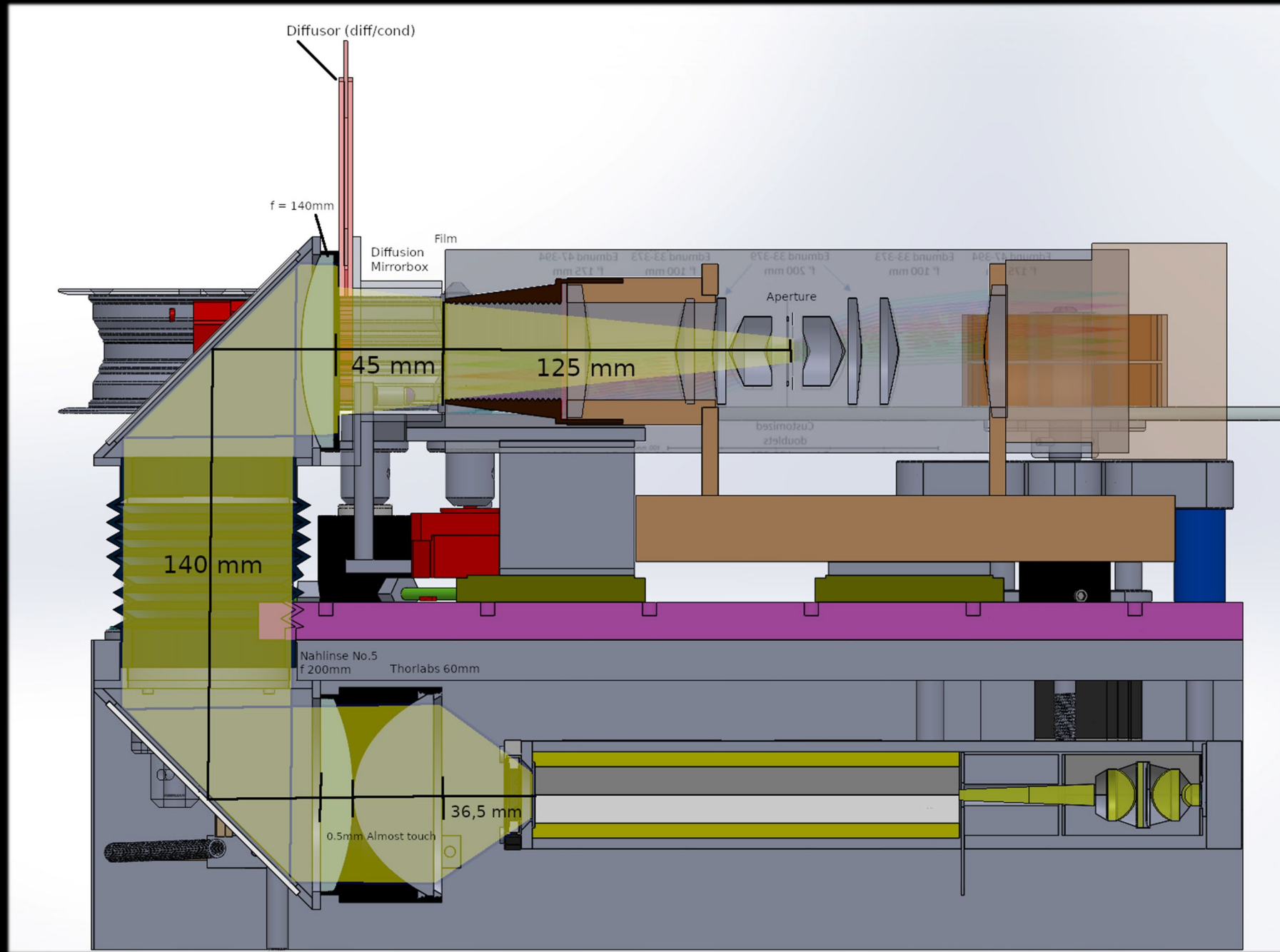




Bert Hardy / Getty

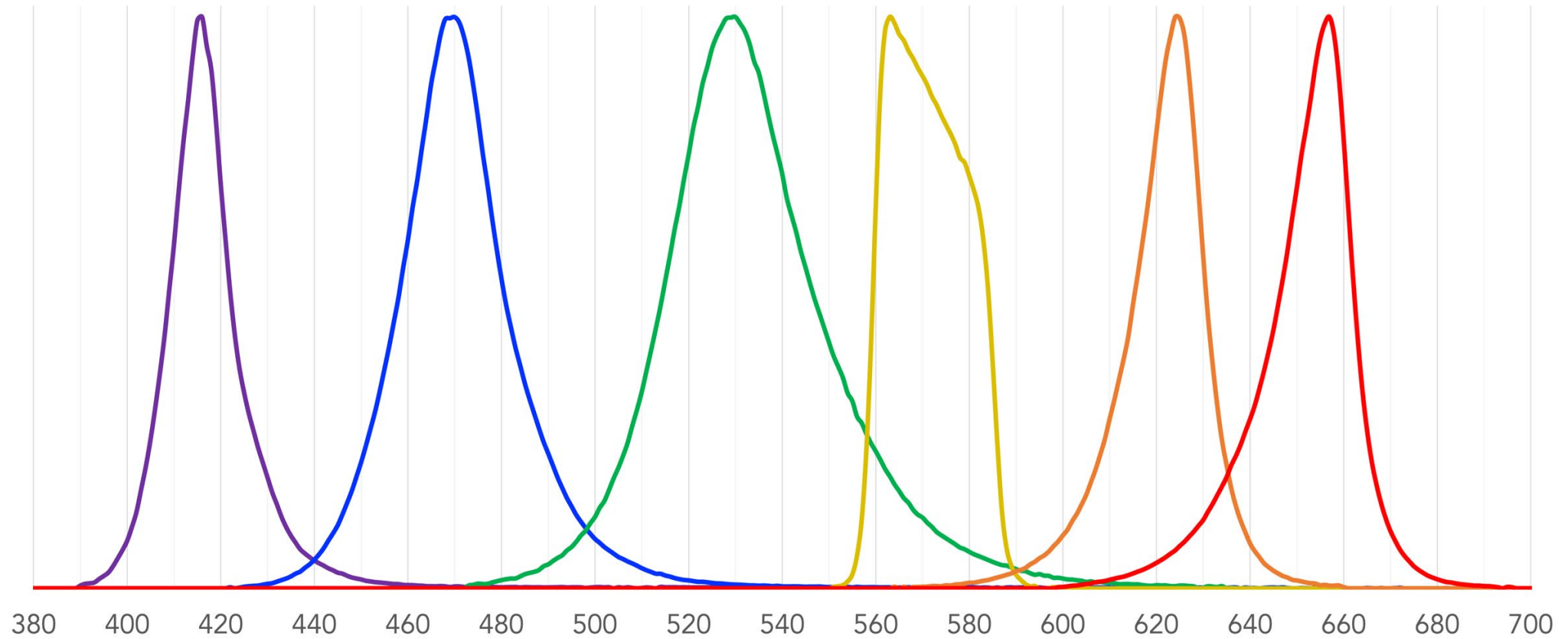


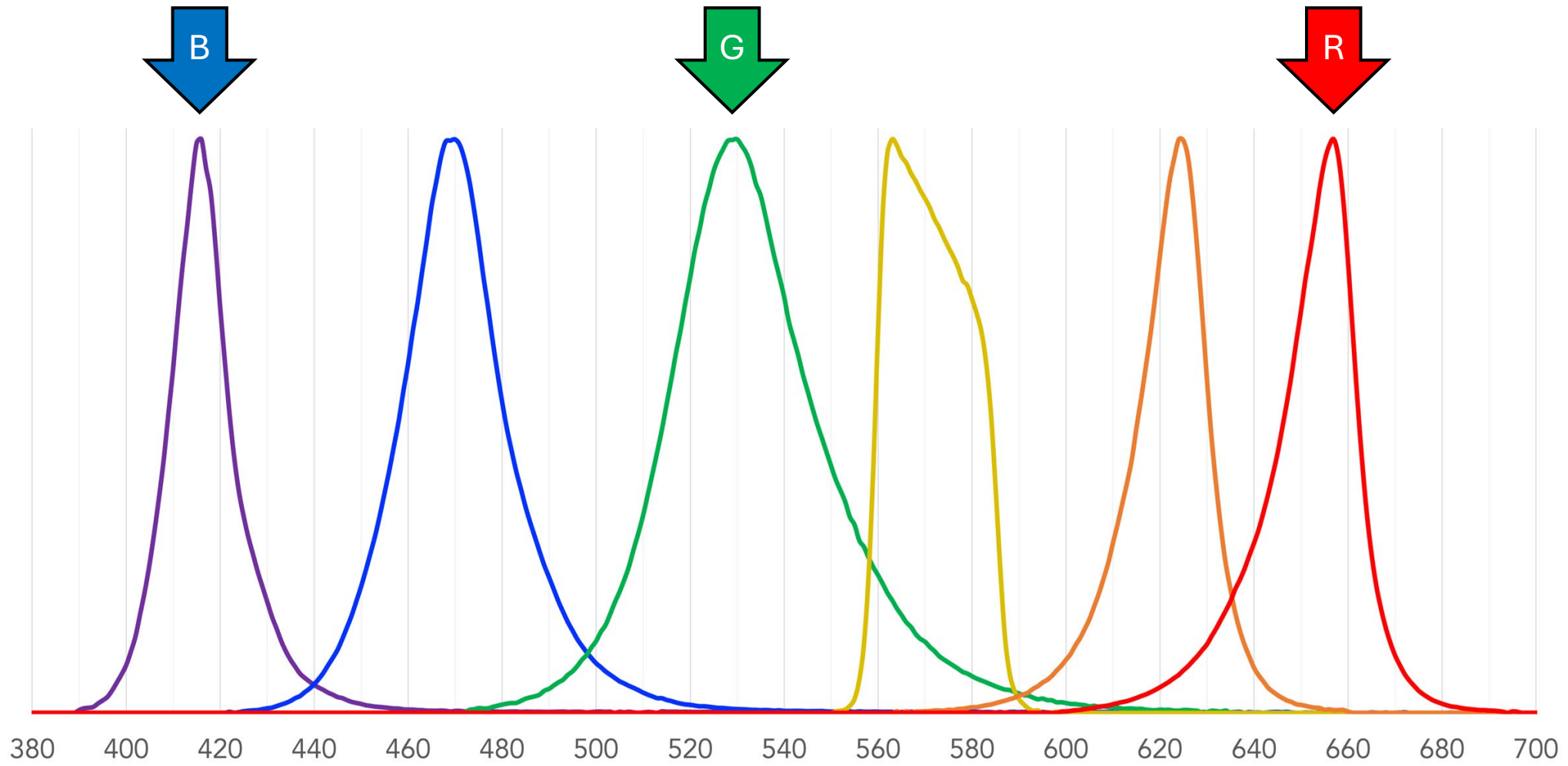






# THE NECESSARY MINIMUM







source: filmcare.org — © Image Permanence Institute (IPI)





136X21





0

3

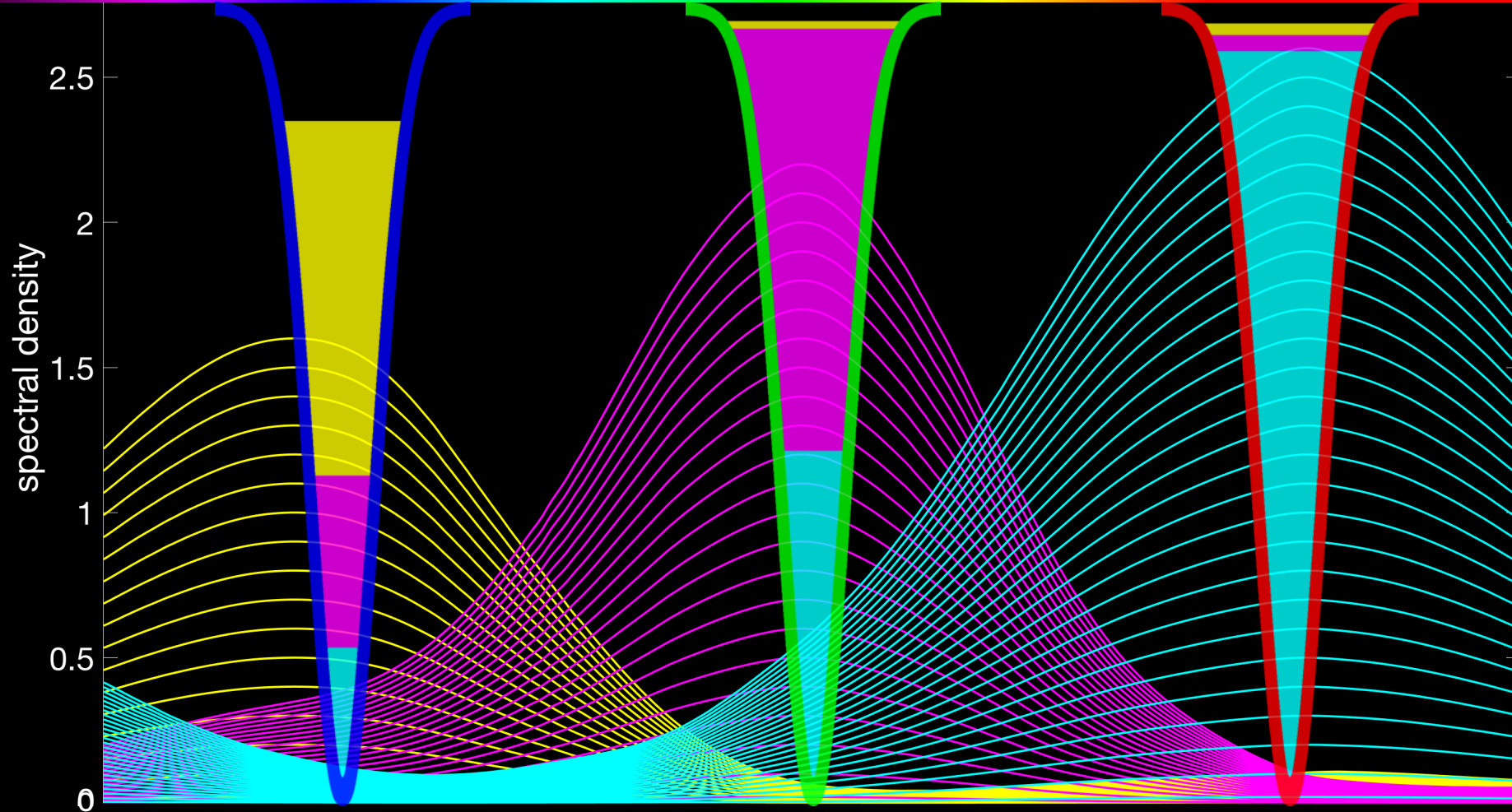
2

400 nm

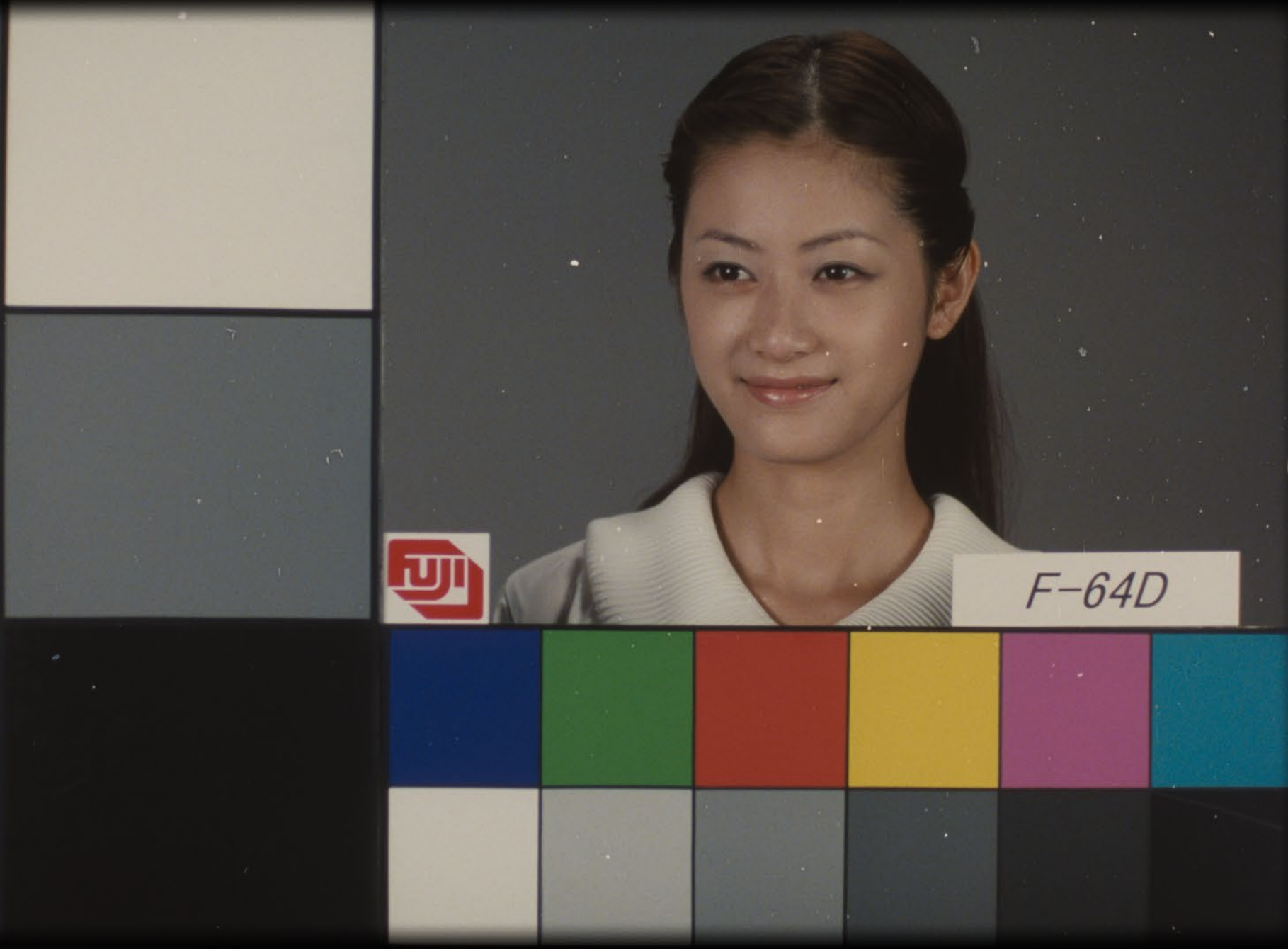
500 nm

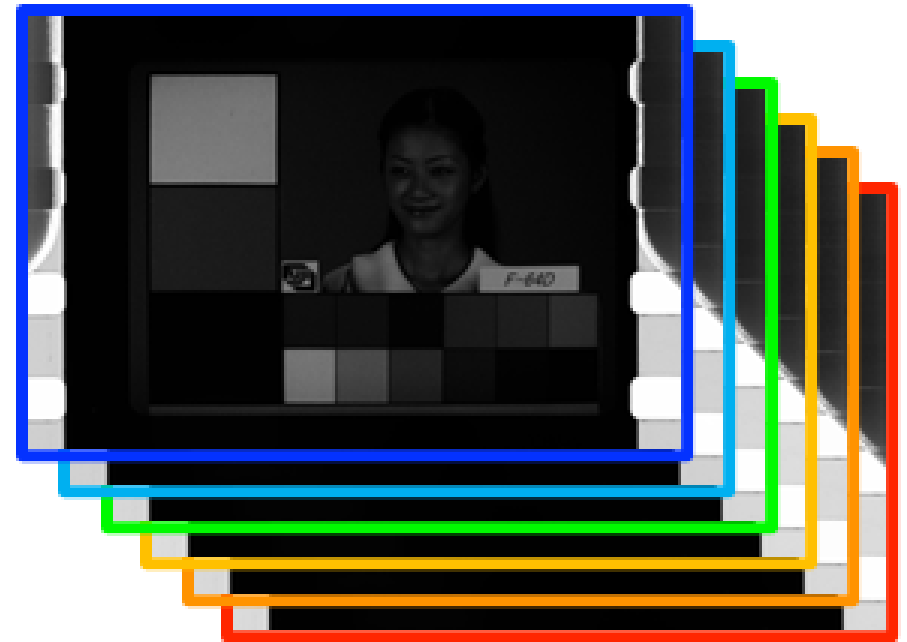
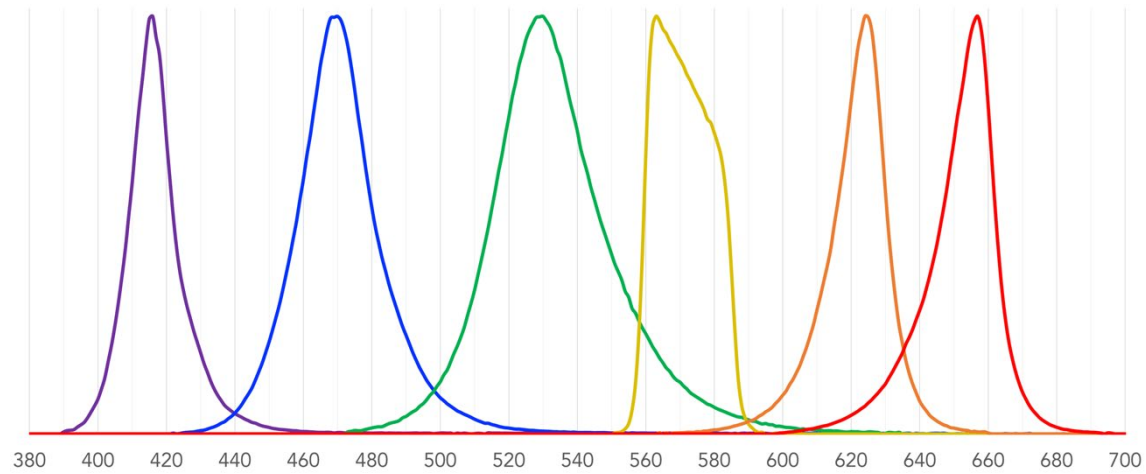
600 nm

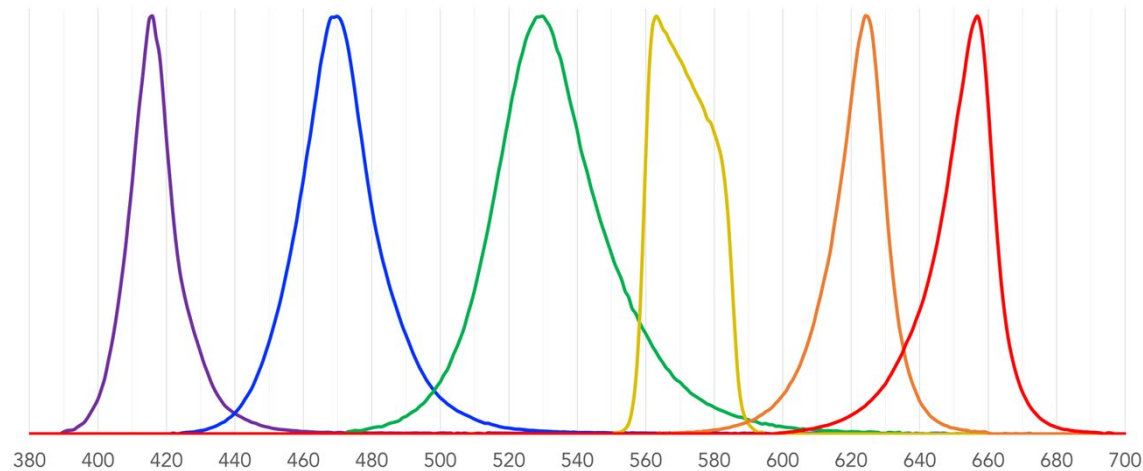
700 nm











International Commission on Illumination  
 Commission Internationale de l'Eclairage  
 Internationale Beleuchtungskommission

spectral reconstruction?

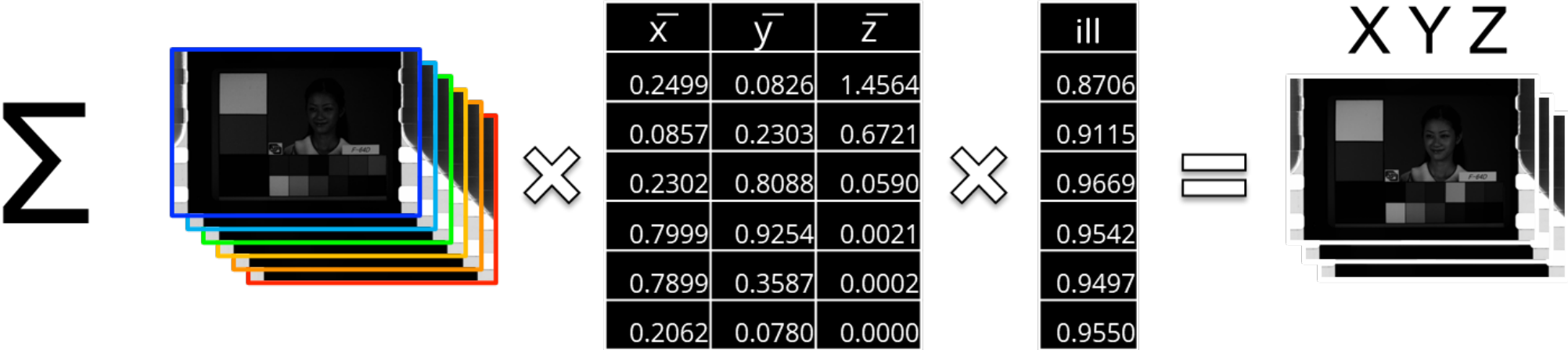


training set





or downsample the rest....





All ▾ Part No. / Keyword



In Stock  RoHS

Products ▾ Manufacturers Services & Tools Technical Resources Help

Account & Orders ▾



All Products > Opto-electronics > LED Lighting > LED Emitters > High Power LEDs - Single Colour



## High Power LEDs - Single Colour

Products (2.899) Datasheets Images **NEW** Newest Products

Results: **2.899** |  Smart Filtering ?

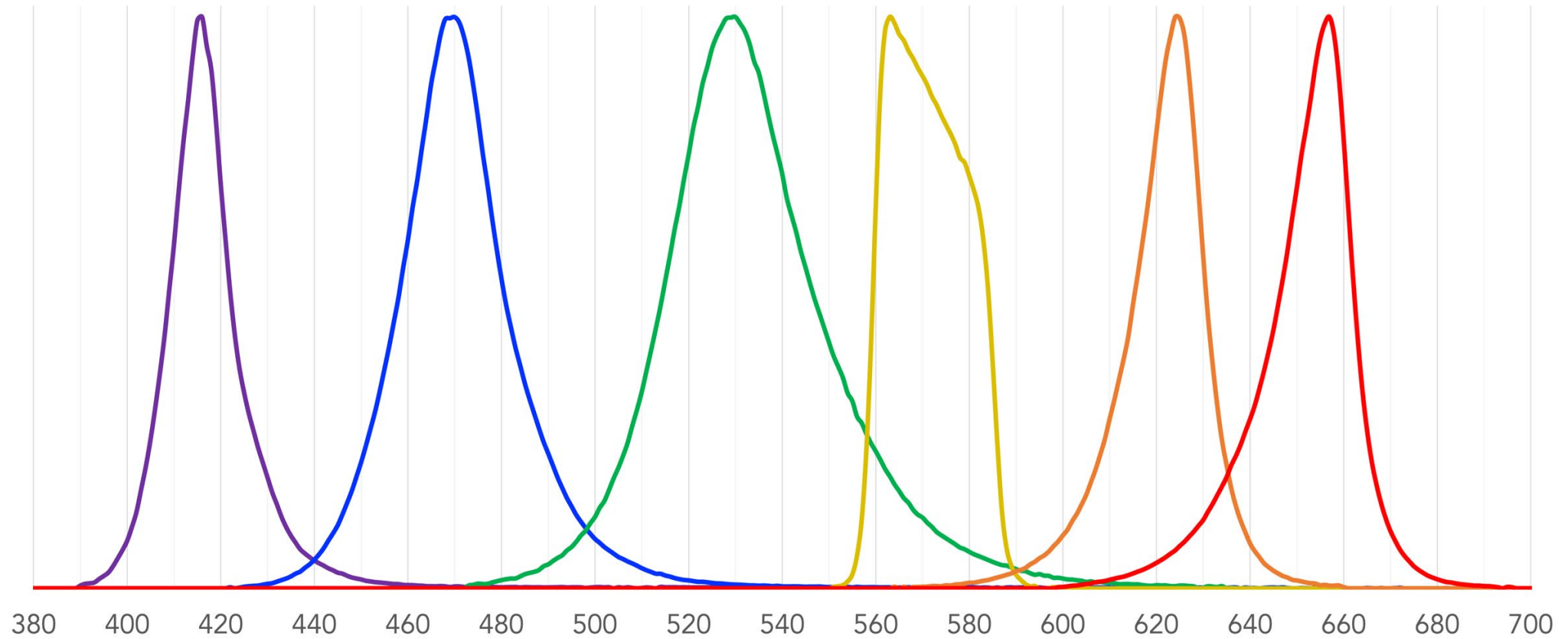
Applied Filters: Opto-electronics LED Lighting LED Emitters **High Power LEDs - Single Colour** ✕

Manufacturer	Product	Mounting Style	Package/Case	Wavelength/Colour Temperature	Illumination Colour	Luminous Flux/Radiant Flux	If - Forward
---- Most Popular ----	Amber LEDs	PCB	0505 (1414 metric)	265 nm	-	2 mW	10 mA
ams OSRAM	Bi-Color LEDs	Screw	0603 (1608 metric)	270 nm to 280 nm	Amber	3 mW	20 mA
Cree LED	Blue LEDs	SMD/SMT	0606 (1616 metric)	274 nm	Blue	14.7 mW	40 mA
Lumileds	Cyan LEDs		0706 (1916 metric)	275 nm	Blue, Ultraviolet (UV)	15 mW	50 mA
Luminus Devices	Green LEDs		0806 (2116 metric)	280 nm	Blue (Royal Blue)	17.5 mW	60 mA
---- A to Z ----	High Power Infrared Emitters		1.4 mm x 1.4 mm	285 nm	Converted Red	18 mW	65 mA
American Bright LED	Horticulture LEDs		1.6 mm x 1.6 mm	286 nm	Converted Yellow	25 mW	100 mA
ams OSRAM	IR LEDs (Infrared)		1108 (2720 metric)	365 nm	Cyan	30 mW	110 mA
Apem	Multi-Color LEDs		1212 (3030 metric)	367 nm	Deep Blue	31 mW	120 mA
Broadcom Limited	Orange LEDs		1313 (3434 metric)	370 nm	Deep Red	34 mW	140 mA
CrayoNano	Purple LEDs		1313 (3535 metric)	380 nm	Dental Blue	35 mW	150 mA
Cree LED	Red LEDs		1410 (3528 metric)	385 nm	Far Red	43 mW	175 mA
Everlight	UV LEDs (Ultraviolet)		1411 (3528 metric)	390 nm	Green	48 mW	180 mA
Inolux	Violet LEDs		1414 (3535 metric)	395 nm	Green (Lime)	49 mW	200 mA
Kingbright	Yellow LEDs		1414 (3838 metric)	---	---	---	---
Lite-On			1515 (4036 metric)	---	---	---	---





# THE NECESSARY MINIMUM



Questions?

